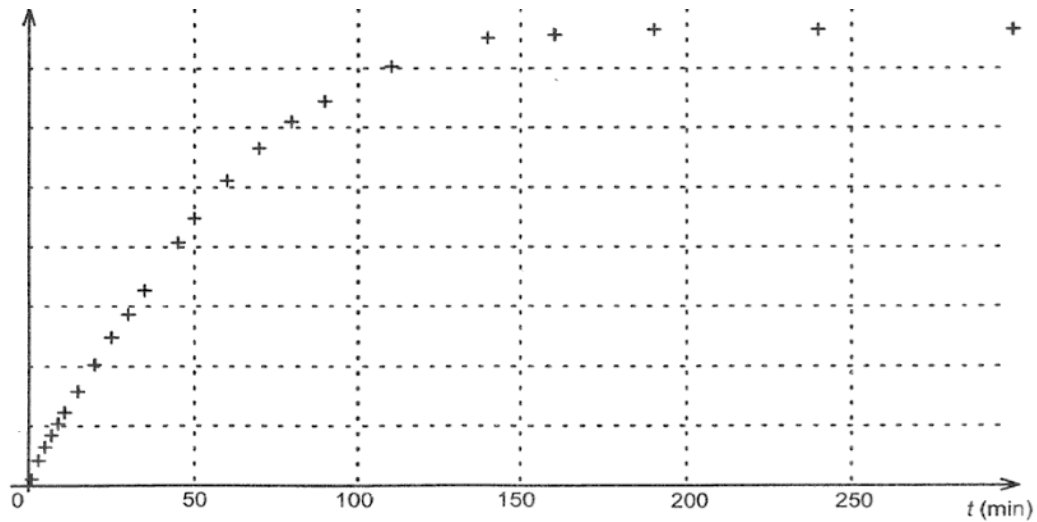


**Resultats obtenus:**

$t$ (min)	0	1,0	3,0	5,0	7,0	9,0	11,0	15,0	20,0	25,0	30,0	35,0
$P$ (hPa)	1020	1030	1060	1082	1101	1120	1138	1172	1215	1259	1296	1335

$t$ (min)	45,0	50,0	60,0	70,0	80,0	90,0	110,0	140,0	160,0	190,0	240,0	300,0
$P$ (hPa)	1413	1452	1513	1565	1608	1641	1697	1744	1749	1757	1757	1757



**Resultats obtenus:**

$t$ (min)	0	1,0	3,0	5,0	7,0	9,0	11,0	15,0	20,0	25,0	30,0	35,0
$P$ (hPa)	1020	1030	1060	1082	1101	1120	1138	1172	1215	1259	1296	1335

$t$ (min)	45,0	50,0	60,0	70,0	80,0	90,0	110,0	140,0	160,0	190,0	240,0	300,0
$P$ (hPa)	1413	1452	1513	1565	1608	1641	1697	1744	1749	1757	1757	1757

